



▶ Food Service Catalog

## Who we are

We are a team of dedicated, responsive service professionals believe every location has unique needs. Our goal is to make sure you have a trusted, problem-solver you can call when you need help. From a broken dish machine to training new staff, we want to make sure you have what you need. No matter what.

## What we do

We create a customized cleaning program to meet your specific needs, making sure you have the right products to keep your location sanitary, safe and protected. Then we teach everyone how to best use the products and equipment in individual, personalized training sessions. Lastly, our ongoing preventative maintenance visits help keep things running smoothly and our service professionals identify potential problems to prevent them from becoming bigger issues.

## Why we're different

We believe your business is as important as you do. And we want to make sure you have the tools, training and support to be successful. Test us out and we'll prove that to you.





Electronic Service Program .....	4
Dishmachine Program .....	6
Dishmachines .....	8
Dishmachine Products .....	12
Three Compartment Sink Program .....	14
Fit® Wash .....	16
Hand care .....	17
Mop Sink .....	18
Ancillary Products .....	20
Drain Maintenance .....	23
Pest Control .....	24
Water Filtration and Softening .....	25
Food Safety Program .....	26
First Aid Kits .....	28

## Electronic Service Program & Preventative Maintenance

Monitoring the operations of your facility is key to effective cost management and to maintaining cleanliness standards. We'd like to help you with that. Every preventative maintenance visit and every service call ends with a report of the work performed, the parts replaced and the current chemical levels. The report is e-mailed to you and anyone else who needs it.

### Process

- ▶ Service Advisor performs Preventative Maintenance visit
- ▶ Facility representative signs report
- ▶ Report is e-mailed to General Manager and other designated individuals



**Emergencies don't have regular business hours, neither do we.**

### Preventative Maintenance

Advantage Service Advisors are dedicated to the concept of preventative maintenance and are trained and certified on all pieces of equipment. Once a month your Advisor will stop by and provide a thorough inspection to ensure machines are operating correctly, staff is trained properly and levels are recorded accurately.


### 24x7x365 Emergency Service

At Advantage, we know that when your equipment isn't working properly your business isn't working properly.

Our 24x7x365 Promise is your insurance policy that no matter what, no matter when and no matter how, an Advantage Service Advisor will be there when you need them.



# Electronic Service Program



**ADVANTAGE**  
FIND YOUR SOLUTION WITH ADVANTAGE

an MCCOY company

27375 VIA INDUSTRIA  
TEMECULA, CA 92590  
955.236.2436

## SERVICE REPORT

ACCOUNT	
ADDRESS	
CITY	ST
TYPE	DATE
TIME IN	OUT

DISHMACHINE		
MFG#	MOD #	
RACK COUNT	SERIAL #	
RESULTS	PRESERVICE	POSTSERVICE
1. Glasses/Plastic Glasses		
2. Stem Ware		
3. Plates/Saucers		
4. Cups/Bowls		
5. Flatware		
MECHANICAL OPERATIONS		
6. Water Level		
7. Fill Valve		
8. Wash/Spray Arms		
9. Vacuum Breaker		
10. Drain Solenoid		
VISUAL		
11. Wallchart		
12. Exterior		
13. Interior/Delime		
14. Caps/Product Tubes		
15. Squeeze Tubes		
MEASURABLES		
16. Detergent Concentration		
17. Detergent mLs		
18. Rinse mLs		
19. Final Rinse Temp		
20. Sanitizer PPM		
21. Wash Temperature		

OPERATOR PROCEDURES	PRESERVICE	POSTSERVICE
22. Racking		
23. Prescraping		
24. Presoaking		
25. Deliming		
26. Curtain Cleaning		
27. Tank Water Change		
28. Scrap Tray Clean		
29. Equipment Clean		
30. Product Usage		
CONVEYOR		
31. Final Rinse Jets		
32. Final Rinse Solenoid		
33. Drain Valves		
34. Conveyor dogs, pegs, bolts		
35. Curtain Condition		
36. Rack Condition		
37. Rinse Temperature		
38. Rinse Arms		
WATER SOFTENER		
39. Mechanical		
40. Hardness		
WATER FILTRATION		
41. Ice		
42. Soda		

SERVICE PERFORMED:

RECOMMENDATIONS:

Inventory & Order Data:
 

Product Name							
Stock on Hand							

MOP SINK
43. Wallcharts
44. Stickers
45. Product Tubes/Caps
46. Spray Bottles

3 COMP SINK
47. Wallcharts
48. Stickers
49. Product Tubes/Caps
50. Sani-Quat PPM
51. Test Strips

PRE-SOAK
52. Wallcharts
53. Stickers
54. Product Tubes/Caps

FIT® VEGGIE WASH
55. Wallcharts
56. Stickers
57. Product Tubes/Caps
58. Fit PH Level
59. Test Strips

**X** Service Representative, Print name: \_\_\_\_\_

**X** Customer Signature, Print name: \_\_\_\_\_

Account details & time stamps

Pre and post service indicators

Review of service preformed

Suggestions for better reports

Manager on duty signature

## Dishmachine Program



Custom Warewashing Solutions

Clean dishware, glassware and utensils is a combination of the right product, machine and training. We want to make sure your results are spotless, so we provide you with:

- ▶ **Regular preventative maintenance visits**
- ▶ **ENERGY STAR certified machines**
- ▶ **Bilingual wallcharts**
- ▶ **On-site training**
- ▶ **Installation and repairs**

With specialized training, support and customized solutions, Advantage Chemical takes you to the next level of cleanliness.



Maintenance Made Easy

Regular Preventive Maintenance visits are scheduled to ensure that your chemicals and systems are all working like they should. Something not quite right? Our 24x7 Service Line is always there to help answer any questions.



ENERGY STAR Performance

The ENERGY STAR emblem signifies that our dishmachines meet strict energy-saving and water-saving efficiency guidelines. For Advantage Chemical customers, it means dishmachine equipment that saves you money while helping save the environment.



Free Parts and Labor

Dishmachines that are being rented through Advantage Chemical will receive free parts and labor as long as you are using Advantage chemicals with that machine.

## Dishmachine Program

From start to finish, creating your ideal solution takes three easy steps:

1. Observing your operation
2. Recommending a comprehensive program
3. Installing the equipment and training the employees

### Rental Program

Renting a machine with Advantage gives you all the benefits of a top-of-the-line dishmachine without having to worry about repairs and labor. Dishmachines that are being rented through Advantage Chemical receive free service. This means that you can breathe easy knowing that if anything ever happens with your system, Advantage will be there to make sure you get back on your feet as soon as possible.



Programs that fit your needs

### Purchase Program

Of course if your situation permits you to purchase a machine outright, Advantage will still be there to help you out. Dishmachines that are purchased through Advantage Chemical will receive the same amazing service and parts guarantee, to ensure that you're always up and running.

### Lease-to-Own Program

Our industry leading Lease-to-Own (LTO) program allows you to have the best of both worlds. With low monthly payments, you can lease your machine from Advantage and still receive service, all while enjoying your top of the line dishmachine.



## Upright Machines

### ADV-AH / C

All stainless steel construction assures long life and years of trouble free operation. Unique spray arm system features upper and lower stainless steel wash arms with reinforced end caps. Specially designed pull-pins allow wash arms to be easily removed for cleaning.



Feature	ADV-AH	ADV-C
Rent / Purchase / LTO	✓/✓/✓	✓/✓/✓
Racks/Covers per hour	40 Rack / 160 Covers	40 Rack / 160 Covers
Direction	Straight	Corner
Max Dish Clearance	17 in.	17 in.
Footprint	25.75 x 25.75 x 57	25.75 x 25.75 x 57
High/Low Temp	Low Temp	Low Temp
Water Usage	1.09 gal/rack	1.09 gal/rack

### ADV-180

Automatic soil purging system. Filters wash water and traps plate debris into an external tray. Tray can be easily removed for dumping contents. Top mounted control box is water tight and includes a rack counter, extended wash/delimer switch and easy to read temperature gauges. Auto start/stop makes operation safe and easy.



Feature	ADV-180	ADV-180 wx Booster
Rent / Purchase / LTO	○/✓/✓	○/✓/✓
Racks/Covers per hour	60 Rack / 240 Covers	60 Rack / 240 Covers
Direction	Straight/Corner	Straight/Corner
Max Dish Clearance	17.5 in.	17.5 in.
Footprint	25 x 25.5 x 60	25 x 25.5 x 60
High/Low Temp	High Temp	High Temp
Water Usage	.82 gal/rack	.82 gal/rack

### ADV-B

Built-in scrap accumulator with all stainless steel drawer prevents food soil from entering drain system. Water inlet comes with built-in strainer, prevents debris from clogging water valve. Stainless steel impeller offers extended life and service.



Feature	ADV-B
Rent / Purchase / LTO	✓/✓/✓
Racks / Covers per hour	80 racks x 320 Covers
Direction	Straight
Max Dish Clearance	20.5 in
Footprint	25.25 x 44.25 x 60.5
High/Low Temp	Low temp
Water Usage	.96 gal/rack

### ADV-E

Top mounted built-in chemical pumps and deliming systems assure proper chemical usage. Power drain saves space, eliminates noisy solenoid and external sump. Drains quickly. Available for straight or corner applications. Integrated scrap tray prevents food soil from entering drain system.



Feature	ADV-E
Rent / Purchase / LTO	○/✓/✓
Racks/ Covers per hour	40 racks / 160 Covers
Direction	Straight/Corner
Max Dish Clearance	17 in.
Footprint	25.75 x 25.75 x 57 in
High/Low Temp	Low temp
Water Usage	1.09 gal/rack

## Undercounter Machines

### ADV-UC-180

Upper and lower rotating wash and rinse arms provide excellent cleaning and rinsing. All stainless steel construction, with no plastic parts to repair. Patented built-in booster heater. Economical, single source heat lowers energy costs.



### ADV-GW-100

Poly Pro™ circular conveyor is extremely durable and reduces chipping and breakage of glassware. Double wall construction for quiet back bar operation.



Feature	ADV-180UC
Rent / Purchase / LTO	✓/✓/✓
Racks / Covers per hour	30 Rack / 120 Covers
Max Glass Clearance	14.5 in.
Footprint	25 x 24 x 33.25
High/Low Temp	High Temp
Water Usage	.75 gal/rack

Feature	ADV-GLX
Rent / Purchase / LTO	⊘/✓/✓
Glasses per hour	1000 2-1/2" glasses/hour
Max Glass Clearance	11.75 in.
Footprint	25.125 x 25.25 x 40.5 in
High/Low Temp	High Temp
Water Usage	12 gal/hour

### ADV-L-1X / L-1X16

All electrical components are attached to a sliding drawer for easy access and service. Convenient to service "Work-in-a-drawer".



### ADV-GLX

Built-in chemical pumps and deliming system assures proper chemical usage. Instant start for simple operation.



Feature	ADV-L-1X	ADV-L-1X16
Rent / Purchase / LTO	✓/✓/✓	✓/✓/✓
Racks/Covers per hour	30 Rack / 120 Covers	30 Rack / 120 Covers
Max Dish Clearance	12.125 in.	16 in.
Footprint	23.5 x 24 x 31 in	23.5 x 24 x 34.25 in
High/Low Temp	Low Temp	Low Temp
Water Usage	1.7 gal/rack	1.7 gal/rack

Feature	ADV-GLX
Rent / Purchase / LTO	✓/✓/✓
Racks / Covers per hour	30 Rack / 120 Covers
Max Glass Clearance	11.25 in.
Footprint	24.75 x 24 x 40
High/Low Temp	Low Temp
Water Usage	1.7 gal/rack

## Specialty Machines



### ADV-FL

New space saving design uses 75% less floor space than traditional Dishmachines. Fits standard 20" x 20" racks. Requires only 5.06 sq ft of floor space. Front loading door design provides optimal working height for easy loading and unloading of dishes.

Feature	ADV-FL
Rent / Purchase / LTO	✓/✓/✓
Racks / Covers per hour	40 racks / 160 Covers
Direction	Straight/Corner
Max Dish Clearance	16 in
Footprint	25.25 x 25.25 x 56.5
High/Low Temp	Low temp
Water Usage	1.09 gal/rack



### ADV-EST-VENTLESS

The HR System (Waste Air Heat Recovery) removes heat and water vapor that normally would be released when opening the dishmachine doors, utilizing that energy to preheat the incoming water; this saves energy while creating a safer and more comfortable environment. High tech condensation method converts the vapor to water, which evacuates the wash chamber at the end of the cycle. Three-door system for straight-thru or corner applications

Feature	ADV-EST-VENTLESS
Rent / Purchase / LTO	✓/✓/✓
Racks / Covers per hour	40 racks / 160 Covers
Direction	Straight/Corner
Max Dish Clearance	20.5
Footprint	29.5 x 25 x 86.3125 in
High/Low Temp	High Temp
Water Usage	1.09 gal/rack



## Conveyor Machines



### ADV-44/66

Built-in chemical pumps and deliming system assures proper chemical usage. Instant start for simple operation. Stainless steel chemical injection chamber. Power rinse heater system. Single control switch activation.

Feature	ADV-44	ADV-66
Rent / Purchase / LTO	⊘/✓/✓	⊘/✓/✓
Racks per hour	244	244
Conveyor Speed	6.8 ft/sec	6.8 ft/sec
Direction	L -> R x R -> L	L -> R x R -> L
Max Dish Clearance	19 in.	19 in.
Footprint	25.125 x 44 x 56.5	25.125 x 66 x 56.5
High/Low Temp	Low Temp	Low Temp
Water Usage	.49 gal/rack	.49 gal/rack

### ADV-EST-44/66

Unique three-stage washing process provides wash, power rinse and final rinse all in a 44" or 66" machine. Includes table limit switch and rack saver clutch system that protects the machine, dish racks and table from damage. Automatic soil purging system filters wash water and traps plate debris into an external tray. Tray can be easily removed for cleaning.

Feature	ADV-EST-44	ADV-EST-66
Rent / Purchase / LTO	⊘/✓/✓	⊘/✓/✓
Racks per hour	243	243
Conveyor Speed	6.5 ft/sec	6.5 ft/sec
Direction	L -> R x R -> L	L -> R x R -> L
Max Dish Clearance	19 in.	19 in.
Footprint	25.125 x 44 x 56.5	25.125 x 66 x 56.5
High/Low Temp	High Temp	High Temp
Water Usage	.49 gal/rack	.49 gal/rack

# Dishmachine Products

## Dishmachine Detergents



### LTD Power

#### Low Temp Dishmachine Detergent

Effective on all soils. Produces the best results in water temperature of 120°.

Advantage Item #	Case Pack
1115	1x5 Gal
1114	4x1 Gal
1112	2x1 Gal



### ATD Power

#### All Temp Dishmachine Detergent

Ideal for low to high dishmachines. Provides the best results in low to moderate hard water conditions.

Advantage Item #	Case Pack
1025	1x5 Gal
1024	4x1 Gal
1022	2x1 Gal



### Guard

#### Metal Safe Dishmachine Detergent

Specially formulated heavy duty detergent designed to produce clean and sparkling tableware with one pass through the dishwasher. Safe on aluminium.

Advantage Item #	Case Pack
1045	1x5 Gal
1044	4x1 Gal



### Solid Force

#### Solid Dishmachine Detergent

Provides clean dishware and sparkling glasses under heavy soil conditions in soft to moderately hard water. Can be used in any dishmachine.

Advantage Item #	Case Pack
1714	4x8 lbs.



### Sterling

#### Solid Metal-Safe Detergent

Safe to use on china, plastics, glassware, aluminum, pewter, and silver. Will not attack machine parts, reducing parts replacement and chance of breakdown

Advantage Item #	Case Pack
1724	4x8 lbs.



### Spotless Rinse

#### Low Temp Dishmachine Rinse Aid

Prevents minerals and soils from re-depositing onto all types of ware. Formula gives perfect sheeting action in soft to moderate water conditions.

Advantage Item #	Case Pack
1315	1x5 Gal
1314	4x1 Gal



### All Temp Rinse

#### All Temp Dishmachine Rinse Aid

Fast acting drying agent. Unique formula gives best performance in shedding all minerals that are found in water.

Advantage Item #	Case Pack
1415	1x5 Gal
1414	4x1 Gal
1412	2x1 Gal



### Noro Rinse

#### Specialty Rinse Aid

Premium rinse that is able to be used in low to high temperature dishmachines.

Advantage Item #	Case Pack
1445	1x5 Gal
1444	4x1 Gal
1442	2x1 Gal



### Fast Action Rinse

#### Specialty Rinse Aid

Specially formulated for use in high solids water conditions. Prevents minerals and Soils from redepositing onto all types of ware, including plastics.

Advantage Item #	Case Pack
1425	1x5 Gal
1424	4x1 Gal



### Solid Rinse

#### Solid Dishmachine Rinse Aid

Provides rapid sheeting action for spot free drying. The product helps eliminate alkaline film deposits from dishware, flatware and glasses.

Advantage Item #	Case Pack
1812	2x5 lbs.

## Dishmachine Products



### Our specialty Dishmachine products are:

- ▶ Highly effective in both soft and hard water
- ▶ Concentrated for maximum savings
- ▶ Available in various case packs
- ▶ Formulated for your specific water conditions
- ▶ For use in high temperature and low temperature dishmachines
- ▶ Available in both liquid and solid formulas

### Liquid Sanitizer



#### Klor Kleen Low Temp Sanitizer

Concentrated sanitizer that provides sanitization of glassware, silverware, dishware and pots and pans.

Advantage Item #	Case Pack
1215	1x5 Gal
1214	4x1 Gal
1212	2x1 Gal

### Pre-Soak



#### Silver Shine Silverware Liquid Pre-Soak

Formulated with alkalies, water conditioners and wetting agents for excellent soil penetration. Leaves flatware and silverware sparkling clean, with half the effort.

Advantage Item #	Case Pack
2335	1x5 Gal
2334	4x1 Gal



## Three Compartment Sink Program

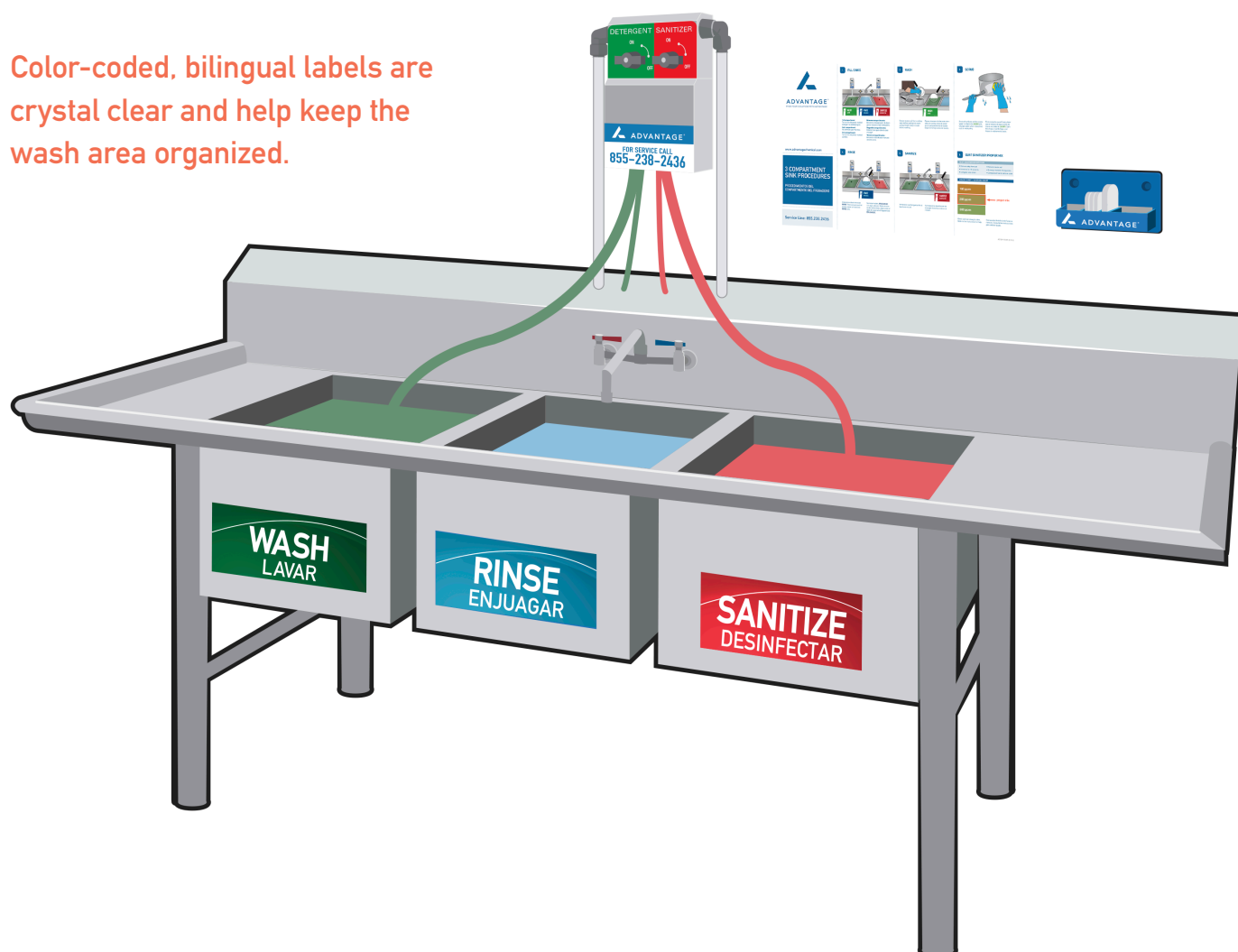
### Cap and Insert Technology

Our chemical bottles have color-coded caps and inserts that match the color-coded tubes on the dispenser, making it easy to connect the right bottle to the dispenser. The cap and insert system also:

- ▶ Eliminates waste from over-pouring
- ▶ Prevents spills and chemical contact
- ▶ Minimizes costs with controlled dilution



Color-coded, bilingual labels are crystal clear and help keep the wash area organized.



## Three Compartment Sink Products



### Manual Detergents



#### Super Suds

##### Manual Pot and Pan Detergent

Removes the toughest food residues and greasy soils. Effective in all water conditions.

Advantage Item #	Case Pack
2125	1x5 Gal
2124	4x1 Gal
2122	2x1 Gal



#### Bold Pot and Pan

##### Concentrated Manual Detergent

Our highest concentration manual dish detergent yet. Powerful clean and high sudsing formula leave a spot free clean.

Advantage Item #	Case Pack
2525	1x5 Gal
2524	4x1 Gal

### Sanitizer



#### Sani-Quat

##### Quat Sanitizer

Effective sanitizer, disinfectant and deodorizer for use on utensils, drinking glasses, counter tops or any non-porous surface. No rinsing required on food contact surfaces.

Advantage Item #	Case Pack
2225	1x5 Gal
2224	4x1 Gal
2222	2x1 Gal



Our multi-quat formula allows for a proper range of 150-400 ppm for food surface sanitizing. With our test strips you can be sure you're providing a safe food environment for your guests.

### Bar Sink Products



#### Low Foam Bar

##### Detergent for Bar Sinks

Quickly cleans glassware and utensils. Low sudsing formulation.

Advantage Item #	Case Pack
2414	4x1 Gal



#### Sani Tabs

##### Steramine Quat Tablets

Designed for ease of use in sinks, sanitizer buckets and hard surface sanitizing. There is no rinsing required on food contact surfaces after using this product.

Advantage Item #	Case Pack
2025	6x150 tabs



### Features and Benefits

- Kills harmful bacteria such as E. Coli, Salmonella sp., Staphylococcus aureus, and Listeria that have been associated with food-borne illness, and is recommended for use on cut, chopped, sliced and other processed produce.
- Made from 100% All Natural ingredients, like citric acid, and contains no chlorine, peracetic acid or other harsh chemicals.
- Helps keep produce crisp and fresh by helping to control food spoilage organisms.
- No need to add or use a separate crisping agent.
- Cleans produce better because it actually removes significantly more dirt, soil, and people-handling residues, unlike washing with water alone, or with chlorine or peracetic acid based products.
- Rinses away clean, and unlike chlorine or peracetic acid, leaves no aftertaste or smell.
- Safer for employees to use - no need for protective eye goggles and gloves.
- Easy to use - We ensure proper dilution through dispensing equipment.
- Inexpensive - Less than a penny a plate!



### Fit® Vegetable Wash Produce Cleanser

Kills harmful bacteria such as E. Coli, Salmonella and Listeria, and is recommended for use on processed produce. Helps keep produce crisp and fresh.

Advantage Item #	Case Pack
4382	2x1 Gal



Fit® is a registered trademark of HealthPro Brands Inc.



## Hand Care Program

Clean hands are one of the most critical elements in protecting the health of your customers. Ensure your employees maintain good hygiene with our premium hand care product line.

### Manual



#### Luxury Satin

##### Hand Soap

Spa-inspired, green certified foaming hand soap offers luxurious foam lather in a fragrance- and dye-free formulation.

Advantage Item #	Case Pack
8532	3x1250 ml



#### Antibacterial

##### Hand Soap

High-performance, antibacterial hand soap offers luxurious lather and an appealing plum fragrance.

Advantage Item #	Case Pack
8562	3x1250 ml

#### ADV-ADX Manual Dispenser



### Touch Free

### FIT® Wash



#### Luxury Satin

##### Hand Soap

Enriched with moisturizers and skin conditioners. USDA certified biobased formulation. EcoLogo certified. Delights users while supporting a healthy environment.

Advantage Item #	Case Pack
8534	2x1200 ml



#### Antibacterial

##### Hand Soap

Attractive purple color. Enriched with a moisturizer, natural extract and skin conditioner. USDA certified biobased formulation.

Advantage Item #	Case Pack
8564	2x1200 ml

#### ADV-TFX Touch Free Dispenser



### Sanitizer



#### Purell®

##### Hand Sanitizer

All the germ fighting power you've come to love from Purell® in a convenient 700ml cartridge.

Advantage Item #	Case Pack
8703-04	4x700 ml

## Mop Sink Products

### Floor Care



#### Mop & Go

##### Enzyme Based Floor Cleaner

Enzyme based product that emulsifies heavy grease & grime buildup with no rinse required.

Advantage Item #	Case Pack
3144	4x1 Gal
3142	2x1 Gal



#### Neutral Floor

##### Neutral Floor Cleaner

Removes oils, grease, grime, inks and other soils. Safe on floors with finishes and no rinse required.

Advantage Item #	Case Pack
3254	4x1 Gal



#### Enforcer

##### Heavy Duty Floor Cleaner

Two-step mopping process to effectively remove grease, oil, dirt and grime. Works great on concrete, grout and quarry tile.

Advantage Item #	Case Pack
3244	4x1 Gal
3242	2x1 Gal



#### All Pine

##### Pine Scented Floor Cleaner

Versatile everyday floor cleaner that leaves behind a pleasant pine scent.

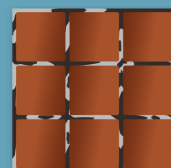
Advantage Item #	Case Pack
3274	4x1 Gal



Grease builds up on the floor creating a safety hazard and causing dark grout lines to appear.

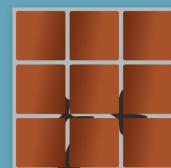
#### Week 1

Spotty grout appears



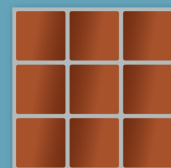
#### Week 2

More grout appears



#### Weeks 3 – 6

Clean grout emerges



Mop & Go's enzyme based formula works great for tough grease stuck in grout. Just mop on, let dry, and let the enzymes do the work!

### Sanitizers and Disinfectants



#### Sani-Quat

##### Multi-Quat Sanitizer

Effective sanitizer, disinfectant and deodorizer for use on utensils, drinking glasses, counter tops or any non-porous surface.

Advantage Item #	Case Pack
2224	4x1 Gal
2222	2x1 Gal



#### One-Step

##### Disinfectant Cleaner

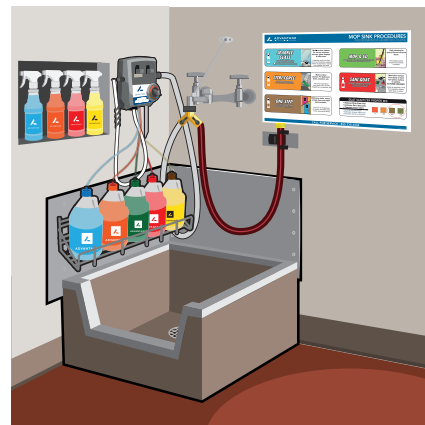
Powerful cleaner and disinfectant that provides effective deodorizing all in one.

Advantage Item #	Case Pack
3154	4x1 Gal
3152	2x1 Gal

## Mop Sink Products

### The Correct Dilution Every Time

When you dispense floor care products and fill your spray bottles all from the same dispenser, you have peace of mind that the products are being diluted to the proper mixture every time. And, the metal racks won't crack or chip, keeping products safe and secure.



### Glass and Multi-Surface



#### Sparkle Glass Glass Cleaner Concentrate

Leaves behind a streak-free shine and can be used on glass, windows, mirrors and more.

Advantage Item #	Case Pack
3312	2x1 Gal



#### Green Lightning Peroxide Glass Cleaner Concentrate

DPE qualified peroxide based cleaner makes quick work of dirty smudged surfaces. Safe and easy to use.

Advantage Item #	Case Pack
3334	4x1 Gal

**NEW!**



#### Multi-Surface Multi-Surface & Glass Cleaner

Safe to use on mirrors, appliances, stainless steel and sealed granite. Removes greasy soil, dust, and film while leaving a streak-free finish.

Advantage Item #	Case Pack
3322	2x1 Gal

### Features and Benefits

- ▶ Cleans with the power of peroxide
- ▶ Design for the Environment green formula
- ▶ 99.9% Natural ingredients, biodegradable
- ▶ Safe & easy to use, leaves surfaces sparkling

### All Purpose Cleaners and Degreasers



#### Citri Force All-Purpose Cleaner

Concentrated, all-purpose cleaner designed to accomplish a broad range of maintenance tasks at low cost.

Advantage Item #	Case Pack
3124	4x1 Gal
3122	2x1 Gal



#### Tan-Jeer Tangerine All-purpose Cleaner

Powerful all-purpose cleaner that leaves behind a fresh citrus scent. Versatile for every day cleaning.

Advantage Item #	Case Pack
3712	2x1 Gal



#### Citri Clean Heavy Duty All-Purpose Cleaner

Powerful, streak free formula. Cleans greasy soils and film from multiple surfaces. May be applied with high pressure equipment.

Advantage Item #	Case Pack
3134	4x1 Gal

## Ancillary Products

### Every facility has its own unique challenges...

From cleaning to deodorizing, to provide proper sanitary maintenance, you want versatile products that provide crystal clear results and spotless performance. Big or small, water access or not, we can help. Our comprehensive line of chemical ancillary products are designed to solve the most common problems associated with the food service and hospitality industries.

#### Polishes

#### Air Fresheners



### Sta Shine

SS Cleaner & Polish – Non Aerosol

Non-aerosol product that cleans, polishes and protects surfaces. When used on food contact surface and equipment, the surface needs to be thoroughly rinsed with potable water before reusing.

Advantage Item #	Case Pack
6626	6x32 oz



### Fresh Neutralizer

Air Deodorizer

Natural, non-toxic, biodegradable gel. Effective way to eliminate indoor odors that is activated by ambient airflow

Advantage Item #	Case Pack
4114	4x4 oz



### Aqua Steel

SS Cleaner & Polish – Aerosol

Aerosol product that cleans, polishes and protects surfaces. When used on food contact surface and equipment, the surface needs to be thoroughly rinsed with potable water before reusing.

Advantage Item #	Case Pack
6616	6x16 oz



### Lemon Air

Lemon Air Freshener

Water soluble deodorizer that attacks a variety of bacteria and other odor causing sources. Eliminates and cleanses odor-causing particles from the surface.

Advantage Item #	Case Pack
4012	2x1 Gal



### Crème Cleanse

Cream cleanser with Soft Abrasives

An abrasive cleaner that restores shine while cleaning porcelain, pipes and other bathroom fixtures.

Advantage Item #	Case Pack
7956	6x32 oz



### Tangerine Lemongrass

Air Freshener

Water soluble deodorizer that incorporates a special formulation that attacks bacteria and other odor causing sources.

Advantage Item #	Case Pack
4512	2x1 Gal



### Fresh Breeze

Deodorizer

Water soluble deodorizer that incorporates a special formulation that attacks bacteria and other odor causing sources.

Advantage Item #	Case Pack
4612	2x1 Gal



## Ancillary Products

### Equipment Care



#### Freezer Cleaner

##### Walk-in Freezer Cleaner

Non-abrasive cleaner for use in commercial grade freezers for general and icy coils. Can be used on all surfaces.

Advantage Item #	Case Pack
6814	4x1 Gal



#### Delimer

##### Scale-Away

High quality solvent for removal of oxidation, corrosion, urine salts, light rust, lime, calcium and iron deposits from bathroom surfaces.

Advantage Item #	Case Pack
4414	4x1 Gal
4412	2x1 Gal



#### Block Whitener

##### Cutting Board Stain Remover

Designed to restore cutting boards to like new condition by removing stains. Formulated for use on food contact surfaces.

Advantage Item #	Case Pack
6754	4x1 Gal



#### Mineral Oil

##### Natural Food Grade Lubricant

Natural mineral oils which that can be used as: food equipment lubricants, dough divider oil, baking pan oil, defoamers, and more.

Advantage Item #	Case Pack
9216	6x32 oz



#### Rapid Green

##### Cleaner & Degreaser for Appliances

This biodegradable, 99.9% naturally derived product dissolves tough soils from rapid heating appliances such as microwaves & hybrid ovens.

Advantage Item #	Case Pack
6256	6x32 oz

**NEW!**

### Features and Benefits

- ▶ Extends life of equipment
- ▶ Based on a certified green formula
- ▶ 99.9% Natural ingredients, biodegradable
- ▶ Safe & easy to use, no more hard scrubbing

### General Purpose



#### Blitz

##### Hard Surface Cleaner

Hard surface cleaner that rapidly cleans bathroom sinks, basins, showers, urinals, fixtures and toilet surfaces. It removes scale, lime, soap deposits and rust stains.

Advantage Item #	Case Pack
4212	2x1 Gal



#### Biozyme

##### Enzyme Based Cleaner

Biodegradable, bacterial solution formulated to break down organic material safely and to attack the cause of the odors and problems.

Advantage Item #	Case Pack
4312	2x1 Gal
4316	6x32 oz



#### All Purpose with Bleach

Cleans and deodorizes porcelain, stainless steel, fiberglass, solid surfaces, natural marble, and ceramic tile, all without leaving a scratch.

Advantage Item #	Case Pack
3416	6x32 oz



#### Xsorb

##### Absorbent Powder

Easy-clean up powder that is used for cleaning up vomit, food spills and bodily fluids. Works by absorbing the liquid and odor and can then easily be swept up.

Advantage Item #	Case Pack
AB5306	2x1.5 Gal

## Ancillary Products

### Oven & Grill Cleaners



#### High Temp Oven & Grill

Hot Oven & Grill Cleaner

Non-caustic cleaner designed for removal of encrusted grease, carbon and other stubborn spills.

Advantage Item #	Case Pack
6426	6x32 oz



#### HD Oven & Grill

Oven & Grill Cleaner Degreaser

High caustic cleaner designed for removal of encrusted grease, carbon and other stubborn spills.

Advantage Item #	Case Pack
6324	4x1 Gal
6326	6x32 oz



#### Liquid Brick

Hot Oven & Grill Cleaner

Will dissolve away even the thickest layers of built-up grease and cooking deposits from grills, ovens, grease filter ducts, and deep fryers.

Advantage Item #	Case Pack
6214	4x1 Gal



### Features and Benefits

- ▶ Extends life of equipment
- ▶ Tough grease and carbon dissolving formula
- ▶ Best for hot surfaces, for easy cleaning
- ▶ Easy to use, no more hard scrubbing



#### Fryer Cleaner

Deep Fat Fryer Cleaner

Quickly removes heavy grease deposits when used in the boil out stage when cleaning a fryer.

Advantage Item #	Case Pack
6190	1x20 lbs

### Soaks and Powdered Cleaners



#### Cafe Klean

Dairy Residue Remover

Targets and removes dried milk residues from milk jugs, pitchers and steam wands. Restores heavily soiled and browned crockery.

Advantage Item #	Case Pack
6920	1x20 lbs



#### Brite Soak

Coffee Urn and Plate Destainer

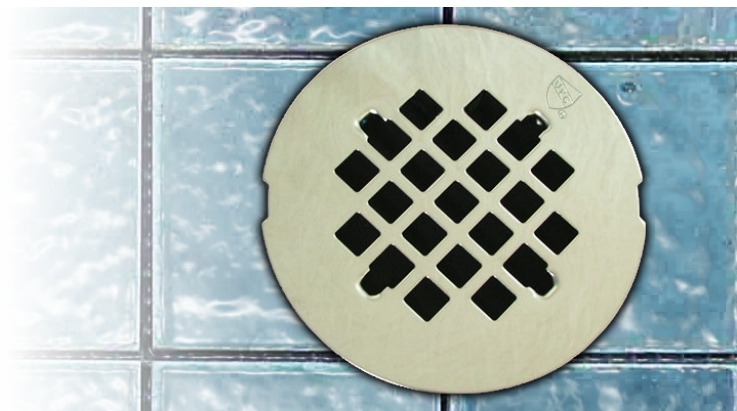
Formulated to remove food stains from plastic and fine china. Loosens food soil and dissolves tough coffee, tea and fruit stains.

Advantage Item #	Case Pack
6720	1x20 lbs

## Drain Maintenance

### When it comes to drains...

Advantage knows a thing or two. Our professional drain maintenance and cleaning services are sure to keep your facility running at optimal performance, and also helps reduce odor and potential sources for pests such as fruit flies.



### Have a sticky situation?



Our full service drain maintenance comes complete with all the tools to tackle your toughest problems. Our Grease Away cleaner uses chemical action to dissolve stubborn grease and oil in your drain lines helping to eliminate odors and keep garbage disposals clear.



#### Grease Away Grease Trap Cleaner

Effectively prevents and dissolves grease and slime buildup in drains, pipes, grease traps and garbage disposals.

Advantage Item #	Case Pack
3956	6x32 oz

Our drain maintenance services also utilize enzyme active formulas that literally eat away at your problems. Millions of live bacteria are utilized to break down and wash away stubborn organic material. These enzymes are environmentally friendly and biodegradable.

- ▶ Complete service
- ▶ Monthly preventative visits
- ▶ Training available



#### Drain Clean Enzyme Based Drain Cleaner

Uses naturally occurring bacteria that eats grease and clogs before they can form. Neutralizes odors, especially hydrogen sulfide, rotten egg odor.

Advantage Item #	Case Pack
3912	2x1 Gal

**A big part of your success** is your focus on great food, superior service and a clean dining area. The last thing you need is a pest infestation. Not only can it damage your facility, but worse, it can ruin your reputation.

With Pest Control Services provided by our partner, Orkin, you can rest assured that your facilities are protected by industry leading pest expertise. Our three step process takes **A.I.M.** at your problems to ensure quality results.

Ask your Advantage Representative for more information.



### Assess

- ▶ Perform a detailed inspection
- ▶ Identify any activity
- ▶ Locate conducive conditions

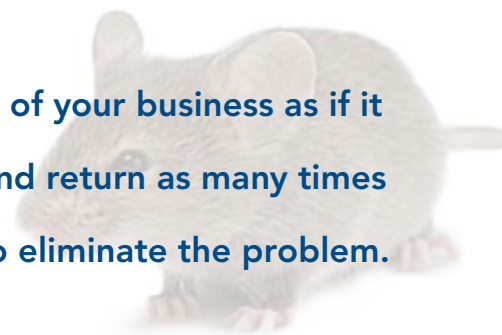
### Implement

- ▶ Solve existing issues
- ▶ Create customized program
- ▶ Implement plan

### Monitor Consistently

- ▶ Inspect monthly
- ▶ Report results
- ▶ Communicate frequently

We'll take care of your business as if it was our own and return as many times as necessary to eliminate the problem.





## Water Filtration and Softening

### Water quality makes a difference...

Water quality plays a critical role in food quality, drain clogging, and equipment and appliance breakdowns. The sediment, minerals and other dissolved solids in hard city water create scale buildup on appliances and can reduce the efficiency of ice machines.

We start with a water quality audit to prescribe appropriate water filtration and softening solutions.



Once we identify your specific needs, we can recommend a water filtration solution that will address anything from low water temperature to hard or soft water.

So whether you need under-counter models, multi-head filter units or reverse osmosis devices, we will customize a system for your unique needs.



### Warewashing Hot Water

Small spaces with low water usage

Advantage Item #

HOTSHOT



### Metered

Mid-size locations with low, consistent daily water usage

Advantage Item #

5600SXT



### Twin Tank Alternating

Standard restaurant set up with variable daily water consumption

Advantage Item #

9100SXT



### Metered with Variable Reserve Capacity

Larger locations with low, consistent daily water usage

Advantage Item #

7000SXT



### Twin Tank Continuous Flow Heavy Duty

Whole location set up

Advantage Item #

9500SXT

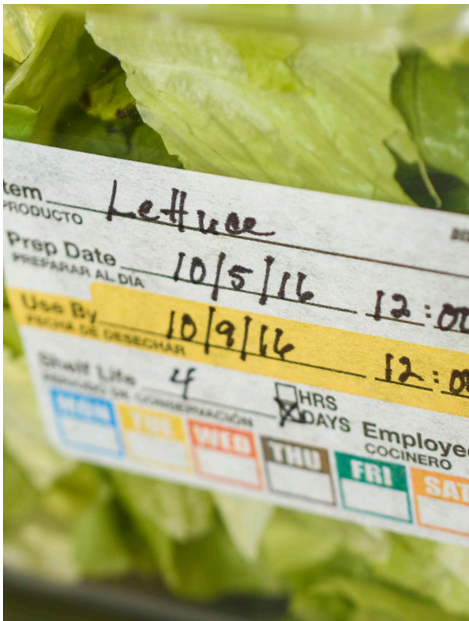
# DATEit™

## Make food prep issues disappear

Food safety is critical to your business and something that requires constant monitoring. From the cooler to the prep area, it is important to know which products to use first to reduce your risk for spoilage.

A key component of any HACCP program is the proper labeling and rotation of all food in the kitchen.

**With a variety of sizes, styles and adhesives, there is something for every kitchen.**



# datecode genie®

Repurpose labor in your kitchen by automating your food labeling system



**Thai Village**  
AUTHENTIC CUISINE

**Siam Egg Rolls**

Must Sell By: Sun 08.05.16

Nutrition Facts	
Serving Size: (245g)	
Amount per serving	
<b>Calories</b> 3453	Calories from Fat 260
<b>%Daily Value*</b>	
<b>Total Fat</b> 168g	45%
Saturated Fat 95g	45%
Trans Fat 0g	13%
<b>Cholesterol</b> 671mg	12%
<b>Sodium</b> 9505mg	66%
<b>Total Carbohydrate</b> 53g	12%
Dietary Fiber 0g	0%
Sugars 0g	
<b>Protein</b> 31g	
Vitamin A 83%	Vitamin C 119%
Calcium 239%	Iron 95%

\*Percent Daily Values are based on a 2,000 calorie diet.

Ingredients: CABBAGE, CARROTS, ONION, CELERY, GREEN BEANS, CONTAINS 2% OR LESS OF: TEXTURED SOY FLOUR, SUGAR, SALT, SPICE, AUTOLYZED YEAST EXTRACT, TOASTED SESAME OIL, GARLIC, DRIED ONION, CONTAINS 2% OR LESS OF: SALT, EGGS, VEGETABLE OIL  
Allergens: Milk, Egg

0 18291 27172 6

2" x 6" Nutritional Barcode Label



One solution  
for all of your  
labeling needs

**Salad Mix**

Employee: Jamie Meyer  
Prepared on: Sat 06.11.16 3:20pm

**MUST USE BY  
Monday  
08.11.16 3:20PM**

2" x 2" Prep Label

**VEGGIE LASAGNA**

**Pan 1 of 5**

2" x 2" Catering Label

Chicken Salad ingredients:  
diced chicken, celery, scallions, sweet onion,  
fresh tarragon, chopped parsley, and mayonnaise.

Prepared on: Tue 5/28/13 3:00 pm

**\$4.99**

2" Circle Grab & Go Label

The Date Code Genie can simplify your food labeling system, repurpose labor and improve production and safety in your kitchen.

For more information, visit [datecodegenie.com](http://datecodegenie.com) or call 800.774.0519.

# SmartCompliance™ Kits and Refill System

## SmartTab ezRefill System

SmartTabs are the key to managing your first aid supply levels. Inserted inside each box of components, these cards provide you with all the information you need to efficiently reorder only the product you actually use. This simple monitoring tool can help cut costs by eliminating reorders of unnecessary supplies. Specially designed cabinets and cases, component boxes and the SmartTab ezRefill system work together to help maintain a consistent, organized supply of products.



SmartTabs are placed 2/3rds of the way through each box of components. When they appear, you know it's time to reorder.

## Innovative and organized cabinet design

- Supply compartments are clearly labeled
- Locking mechanism keeps boxes in place, limiting pilferage
- Solid steel case construction is built to last
- Expandable pocket for customized storage
- ANSI minimum contents list on door for quick reference





# First Aid SmartCompliance Kits



## Large Metal SmartCompliance First Aid Cabinet

Large, solid steel cabinet comes with a carrying handle and is wall mountable.

50  
PERSON

A+  
CLASS

I & II  
TYPE



Item#: **746005** Food Service With Medications **289 PIECES**

Item#: **746006** Food Service Without Medications **260 PIECES**

746005	FA746006	COMPONENTS	ITEM NO.
1	1	First Aid Guide	FAE-6017
	1	Elastic Bandage Wrap, 2" x 5 yd	FAE-3009
2	2	Blue Metal Detectable Bandages, 1" x 3", 25ct	FAE-3010
1	1	Knuckle Blue Metal Detectable Bandages, 20ct	FAE-3030
1	1	Fingertip Blue Metal Detectable Bandages, 20ct	FAE-3040
1	1	Alcohol Wipes, 20ct	FAE-4001
2	2	BZK Antiseptic Towelettes, 10ct	FAE-4002
1	1	Hand Sanitizer Packets, 10ct	FAE-4007
1	1	Sterile Gauze Pads, 2" x 2", 10ct	FAE-5000
1	1	Sterile Gauze Pads, 3" x 3", 10ct	FAE-5005
1	1	First Aid Tape, 1/2" x 5yd and Gauze Roll, 2" x 4yd	FAE-6003
1	1	Scissors	FAE-6004
1	1	Triangular Bandage, 40" x 40" x 56"	FAE-6007
1	1	Cold Pack, 4" x 5"	FAE-6012
	1	Moleskin Blister Prevention, 2" x 2", 10ct	FAE-6013
1	1	Nitrile Exam Gloves, 4ct	FAE-6018
1	1	Forceps/Tweezers	FAE-6019

746005	FA746006	COMPONENTS	ITEM NO.
1	1	2 Sterile Eyepads, 1oz Eyewash, 1/2" x 5 yd Tape Roll	FAE-6022
1	1	CPR Mask	FAE-6023
1	1	Trauma Pads, 5" x 9", 2ct	FAE-6024
1	1	Finger Cots, 50ct	FAE-6050
1		Non-Aspirin Tablets, 20ct	FAE-7008
1	1	Burn Cream Packets, 10ct	FAE-7011
1	1	Burn Dressing, 4" x 4"	FAE-7012
1		Ibuprofen Tablets, 20ct	FAE-7014
1	1	Antibiotic Ointment Packets, 10ct	FAE-7021

ITEM #	LENGTH	WIDTH	HEIGHT	WEIGHT	CASE MATERIAL
746005	13.5	3	14.5	6.5	Metal
746006	13	4.125	14	6.19	Metal

## Smart Compliance & Spill Kits



### Medium Metal SmartCompliance First Aid Cabinet

25 PERSON

A CLASS

I & II TYPE

Compact, solid steel case comes with a carrying handle and is wall mountable. Contents meet the 2015 ANSI Class A requirements.



### Bodily Fluid Spill Clean Up Kit - with PPE and CPR Pack

50 PERSON

Durable plastic case includes carrying handle and is wall mountable. Kit contents provide complete protection during biohazard cleanup, and also includes a CPR pack.

#### Item#: 90658 Food Service Without Medication 94 PIECES

90658	COMPONENTS	ITEM NO.
1	1 Triangular Bandage & 1 CPR Mask	90643
1	Blue Metal Detectable Bandages, 1" x 3", 25ct	FAE-3010
1	BZK Antiseptic Towelettes, 10ct	FAE-4002
1	Hand Sanitizer Packets, 10ct	FAE-4007
1	Sterile Gauze Pads, 3" x 3", 10ct	FAE-5005
1	First Aid Tape, 1/2" x 5yd and Gauze Roll, 2" x 4yd	FAE-6003
1	Scissors	FAE-6004
1	Cold Pack, 4" x 5"	FAE-6012
1	First Aid Guide	FAE-6017
1	Nitrile Exam Gloves, 4 count	FAE-6018
1	Forceps/Tweezers	FAE-6019
1	2 Sterile Eye Pads, 1 oz. Eyewash, 1/2" x 5 yd. Tape Roll	FAE-6022
1	Trauma Pads, 5" x 9", 2ct	FAE-6024
1	Burn Cream Packets, 10ct	FAE-7011
1	Burn Dressing, 4" x 4"	FAE-7012
1	Antibiotic Ointment Packets, 10ct	FAE-7021

ITEM #	LENGTH	WIDTH	HEIGHT	WEIGHT	CASE MATERIAL
90658	11.25	9	3	5.5	Metal

#### Item#: 216-O

31 PIECES

216-O	COMPONENTS
3	BZK antiseptic towelettes
1	Disposable gown w/full sleeves
1	Disposable bonnet
2	Disposable shoe covers
1	Eye shield with ear loop mask
1	Fluid control solidifier pack, 21 gm.
1	Biohazard scoop
2	24"x24" Biohazard bags
2	8"x12" Clear plastic bags
2	Twist ties
3	Disposable clean-up towels 5"x8"
2	Germicidal (kills germs) wipes
2	Nitrile Exam Gloves, 1 pair
1	Bodily fluid pick-up guide
1	CPR Pack: 1 CPR one-way valve face shield, 2 nitrile exam gloves, and 3 BZK antiseptic towelettes, all latex free

ITEM #	LENGTH	WIDTH	HEIGHT	WEIGHT	CASE MATERIAL
216-O	9	2.5	8	1.3	Plastic

## Specialty Kits



### Burn Care Kit in a Hard-Shell Plastic Case

KIT

Durable, reusable plastic case features a carrying handle and a gasket-sealed lid. This 12-piece kit includes the basic necessities for burn care.

Item#: 440-O/FAO

12 PIECES

440-O/FAO	COMPONENTS
	3" Conforming gauze roll bandage, sterile
1	3"x5 yd. Cohesive elastic bandage wrap, latex free
1	1"x5 yd. First aid tape roll
2	4"x4" burn dressings
1	4"x16" burn dressing
4	Exam quality vinyl gloves, 2 pairs
1	4-1/2" Scissors, nickel plated

ITEM #	LENGTH	WIDTH	HEIGHT	WEIGHT	CASE MATERIAL
440-O/FAO	7.688	2.375	4	1.29	Plastic



### Double Eyewash Station with 16oz. Bottles

KIT

This wall mountable eye flush station includes a single 16oz bottle of sterile isotonic buffered solution for flushing or irrigating the eyes.

Item#: 90500

90500	COMPONENTS
2	16 oz. Bottles Sterile Isotonic Buffered Solution
1	Wall Mount Kit

ITEM #	LENGTH	WIDTH	HEIGHT	WEIGHT	CASE MATERIAL
90500	19	3.5	11.25	4.0	Plastic

# Products & Services

## DISHMACHINE

- High and low temp detergents
- Low temp sanitizer and rinse aids
- Solid detergents and rinse aids

## THREE COMPARTMENT SINK

- Detergent
- Sanitizer
- Pre-soak

## MOP CARE

- Enzyme and neutral floor cleaners
- Multi-surface and glass cleaners
- Disinfectant

## HAND CARE

- Antimicrobial foaming hand soap
- Foaming hand sanitizer
- Liquid hand sanitizer

## GENERAL CLEANING

- Coffee urn and plate soak
- Stainless steel cleaner and polish
- Freezer cleaner
- Oven and grill cleaner
- Fryer cleaner
- Delimer
- Wood polish

## LAUNDRY

- Detergents, builders, sours, destainers
- Dual action soft n' sour, suds n' break
- Full line of pre-spotters

## ADDITIONAL SERVICE

- Pest control
- Water softening and filtration
- Food safety program
- First aid kits

[www.advantagechemical.com](http://www.advantagechemical.com)

From the smallest mobile operator to the largest commercial kitchen, we are committed to bringing you the cleaning programs and services to meet your individual needs.



**ADVANTAGE®**  
PO BOX 1202  
Temecula, CA 92593  
**855.238.2436**